

# Wide 5" Color GPS/Combo/Fishfinder

## N500/NF500/F500



*It will bring all mariners to a distinctive level of experiencing at sea !!*

**Wide 5" High resolution TFT LCD !!**

**Function by using icon for menu !!**

**N500**



**NF500**



- Save a chart image on internal memory (128M)
- Save internal data on Micro SD card
- View and print saved data on Micro SD card



- Adjustable bracket can be attached or detached easily

## Wide 5" Color GPS/Combo/Fishfinder **N500/NF500/F500**

### ◆ Features

- Wide 5" High resolution TFT LCD
- Fast screen response by high performance CPU
- 10 steps adjustable LED backlight
- Multiple languages available including English, Chinese, Russian, Thai, Malay etc.
- 128MB internal memory and built-in standard Samyung chart
- DGPS(WAAS, MSAS, EGNOS)
- User-friendly operation type by using icon for each menu
- NMEA 0183 interface (AIS, NAVTEX, DSC etc.)
- 4 split screens (Chart, Data, Highway, Fishfinder etc.)
- Suitable for small fishing boat
- Using single(200KHz, 300W) & dual(50/200KHz, 600W) frequency for detection of small and individual fish
- Easy to use by auto gain



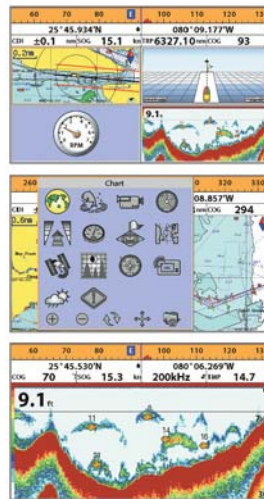




Best features that navigators need.  
Robust electronics for the rough seas.

**F500**

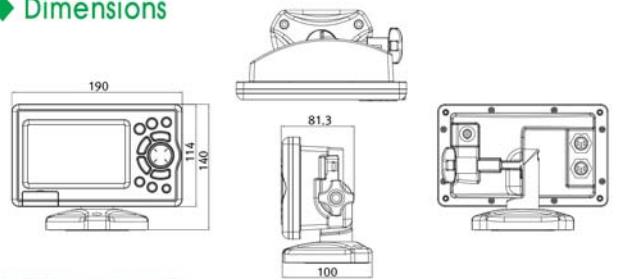
Spec.	Model	N500	NF500	F500
Size		140 mm(H) x 190 mm(W) x 81.3 mm(D)		
Display		Wide 5" TFT color, 800 x 480 pixels		
Supply voltage		10 to 32 V DC		
Operating temp.		-10°C ~ 50°C		
Alarms		Arrival radius, anchor, XTE, danger, too shallow, too deep, fish, temperature, temperature rate, low battery, low fuel(optional), loss of DGPS fix, radar guard zone, dangerous AIS vessels.		
Chart/User card		NAVIONICS® GOLD/Micro SD Card		-
Waypoints		10,000 waypoints (Event Mark : 48, Mark Color : 16)		-
Routes		100 Routes, with up to 100 points each		-
Tracks		By time or distance, 10 track of 15,000 points		-
Chart datums		216 Chart datums		-
Chart scale		0.2 ~ 500 nm		-
Interface		NMEA 0183 (2 port)		-
Frequency/Output		-	200KHz(300W) 50/200KHz(600/W)	
Depth range		-	Min : 0m~3m, Max : 0m~1500m	
Color display		-	16 colors / 8 colors	
Brightness		-	10-step	
Screen moving speed		-	super fast, fast, medium, low, stop	
Battery voltage display		-	Voltage number display	
Auto gain adjustment		-	OFF/ON	
A-Mode display		-	OFF/ON	
Demo display		-	OFF/ON	
STC		-	0%~75%	

\* Specification is subject to change without notice



- AIS information on chart plotter by connecting to compatible AIS receiver (NMEA0183)
- Four split screen presentation available
- Display multiple functions on split screen
- Choose a page / function by using icon for menu
- Various icons 
-  Display fish size
- Single frequency(200kHz) transducer  
Dual frequency(50/200kHz) transducer (Water temperature, speed sensor)
- Zoom, Bottom lock, Full screen zoom, Bottom, 200KHz, A-Scope

### ◆ Dimensions



### ◆ Component

- Main unit 1Unit
- GPS Antenna(N500/NF500) 1Unit
- Transducer(NF500/F500) 1Unit
- Installation materials, Spare parts, Manual 1Set

### ◆ Option

- Power Supply
- Micro SD Card
- NAVIONICS® GOLD

# SAMYUNG ENC

[www.samyungenc.com](http://www.samyungenc.com)

 **SAMYUNG ENC Co.,Ltd.** Head Office : 69, Sangni-Ro, Youngdo-Gu, Busan, Korea, 606-083 Tel : 82-51-601-5530(Rep.) Fax : 82-51-413-4446  
A/S Center : 76, Jeoryeoung-Ro, Yungdo-Gu, Busan, Korea, 606-802 Tel : 82-51-601-5570~4(Rep.) Fax : 82-51-416-5515