

# ComNav®



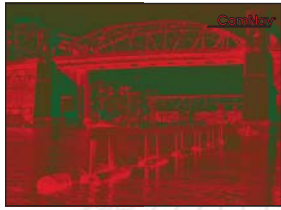
## Explorer V1T Thermal Night Vision Camera System

**Digitally Rate Stabilized  
and  
Higher Quality Picture**

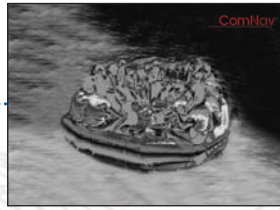
- Crisp rate stabilized thermal images: 384 x 288 pixels; 44% greater image quality than conventional 320 x 240 units;
- ComNav Digital Pattern Enhancement (DPE) to provide superior high resolution images in complete darkness, light fog, smog or low light environments
- Easy touch 2x, 4x electronic zoom via joystick control keypad
- Rugged construction meets or exceeds military standards
- 360 degrees continuous pan and -15~90° tilt with auto flip provides seamless view coverage
- Wide angle field of view provides commanding aid in navigation during twilight hours and allows for optimal manoeuvring for docking inside a marina
- Durable, Rugged lightweight Plastic design with carbon effect center body option; weatherproof to IP66
- Built-in Heater
- 5 Display Modes: Black Hot, White Hot, Red Black, Iron Bow, Reverse Iron Bow
- Scene Selection Modes: Day Running, Night Running, Man Overboard, Fog Mode, Marina Mode
- Flexible mounting configurable via dip switch
- 100 user definable Preset Memory Positions
- Up To 40 Preset positions can be used to form Auto Cruise Function
- High precision positioning / Stable PTZ
- Auto Scan, Cruise, Pattern Scan
- Object Tracking Feature - optional
- Extremely compact housing
- Compatible with most standard types of Marine Displays
- CE, FCC certified and RoHS compliance
- 2 Year Warranty
- Worldwide Service

# EXPLORER V1T

## SYSTEM CONFIGURATION & OPTIONS



**Easy Navigation – Various Colors**  
Assists by enhanced visual capability in darkest environments, allows for increased manoeuvring when twilight docking, long range distance awareness in low light conditions.



**Man Overboard Rescue**  
Can assist with faster response times in man overboard search and rescue applications.



**Security**  
Helps to identify and track vessels or objects on perimeter security, collision avoidance, vessel and crew protection.



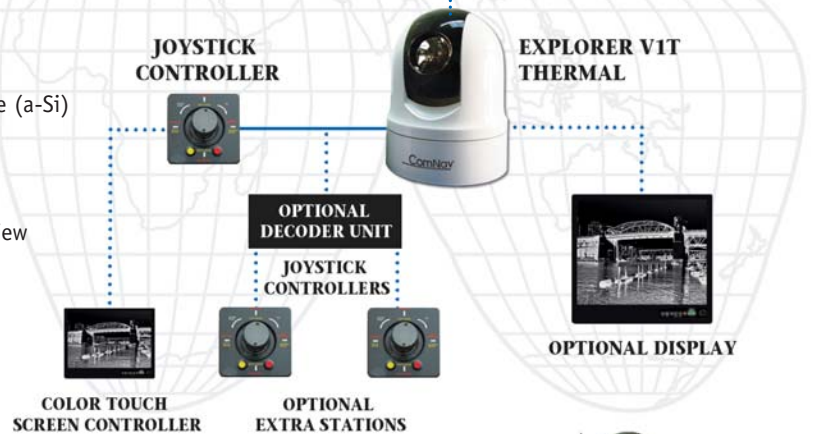
**Situational Awareness**  
Anti-piracy security tool; allows for comprehensive multi-zone monitoring, long range viewing and greater night vision, iceberg detection, fire detection.

### THERMAL IMAGING PERFORMANCE:

<b>Focal Plane Array Detector:</b>	Uncooled Amorphous Silicone (a-Si) Microbolometer
<b>Pixel:</b>	384 x 288
<b>Field of View:</b>	30° (H)
<b>Lens:</b>	15 mm - wider fixed angle view
<b>Electronic Zoom:</b>	2 x, 4 x
<b>Thermal Sensitivity:</b>	<50 mK @ f/1.0 @ 25°C
<b>Spectral Range:</b>	8 – 14 μm
<b>Focus:</b>	Fixed

### SPECIFICATIONS:

<b>Camera Finish:</b>	White
<b>Operating Voltage:</b>	9 - 15 VDC
<b>Power Consumption:</b>	15 W Max
<b>Operating Temperature:</b>	-25°C to +70°C
<b>Storage Temperature:</b>	-40°C to +85°C
<b>Waterproof:</b>	Sealed to IP66 standards; marine cables & corrosion resistant connectors
<b>Wind Resistance:</b>	100 Knots
<b>Encapsulation:</b>	Sand & dust proof to Mil-Std-810E Salt, mist & humidity to IEC60945
<b>Shock Resistance:</b>	Mil-PRF-28800F, Class 2 Section 4.5.5.3.1
<b>Vibration Resistance:</b>	Mil-PRF-28800F, Class 2 Section 4.5.5.4.1
<b>Compliance:</b>	CE, FCC, RoHS



### DIMENSIONS:

**Camera:** 13cm / 5.2 inches in diameter  
16cm / 6.3 inches in height  
**Joystick Keypad:**  
10cm (4 inches) x 10cm (4 inches)  
**Weight:** camera: 1.2 kg / 2.65 lbs



### ADDITIONAL FEATURES:

- Multi-function joystick control
- Multiple Thermal Display Modes and Scene Selection Modes
- Control Mode: RS485 Serial / Bespoke
- Proportional Pan/Tilt speed in accordance with degree of zoom
- Random scan function
- Preset positioning tour
- Wide angle thermal imaging view (35 Degrees Horizontal)
- Fixed focus lens
- IP Compatibility Via IP Converter
- Image Flip
- Auto Hot Spot Track
- Total Pixels: 110,592 - 44% higher than conventional resolution
- Video Connection: 1 x BNC 1vP~P/75 Ohm Composite PAL or NTSC

# ComNav®



**ComNav Marine Ltd.**  
#15-13511 Crestwood Place,  
Richmond, British Columbia • Canada • V6V 2G1  
Phone: 604-207-1600 • Fax: 604-207-8008  
E-mail: sales@comnav.com

[www.comnav.com](http://www.comnav.com)

**Worldwide Service**

Printed in Canada

Represented by:



Specifications subject to change without notice